



# VeloVault

Analog supercar stewardship

Built for *owners* who know a car earns its story on the road.

A private mythology ledger for analog supercars that still get driven, warmed through, serviced, and preserved with discipline.

The product is not a garage-queen inventory sheet. It is a record room for gated shifters, belt services, stamp books, specialist receipts, imperfect miles, and the human restraint required to show only what should be shown.

# The Garage Queen Inventory

Complete public exposure.

Zero miles prioritized.

Static asset valuation.

Odometer viewed as liability.

# Analog Supercar Stewardship

Curated privacy and redaction.

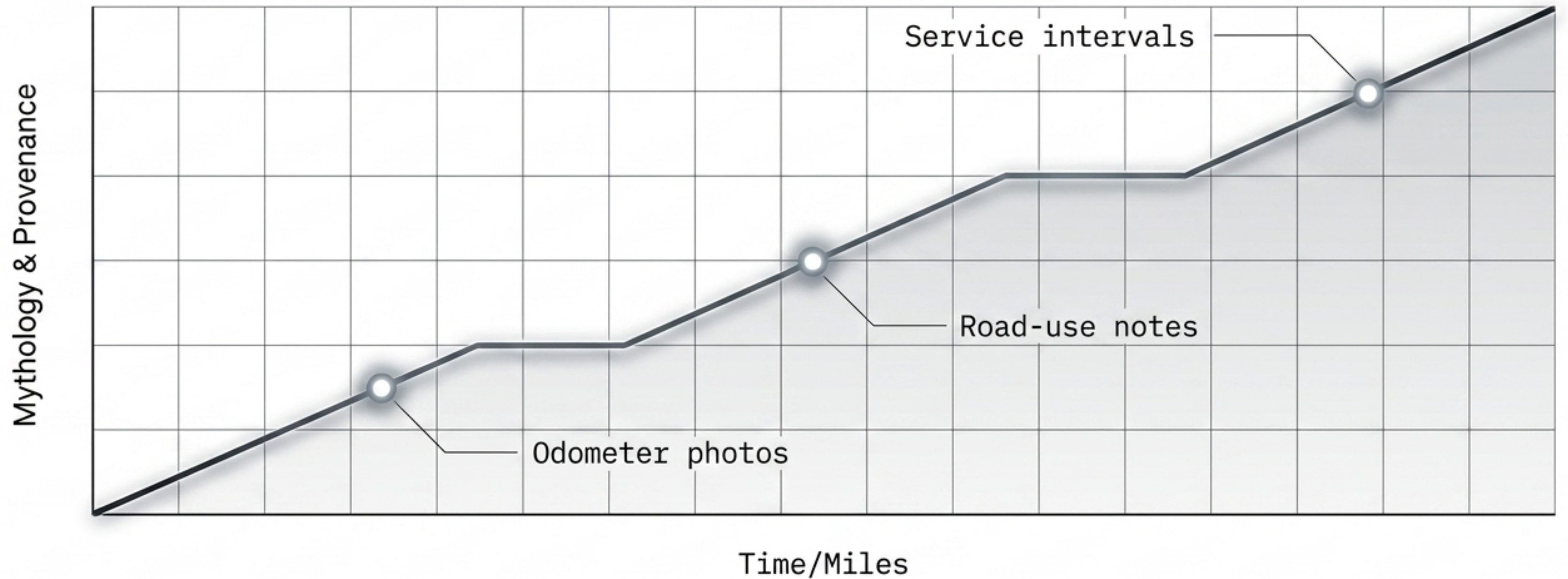
Preserved with discipline.

Living, mechanical history.

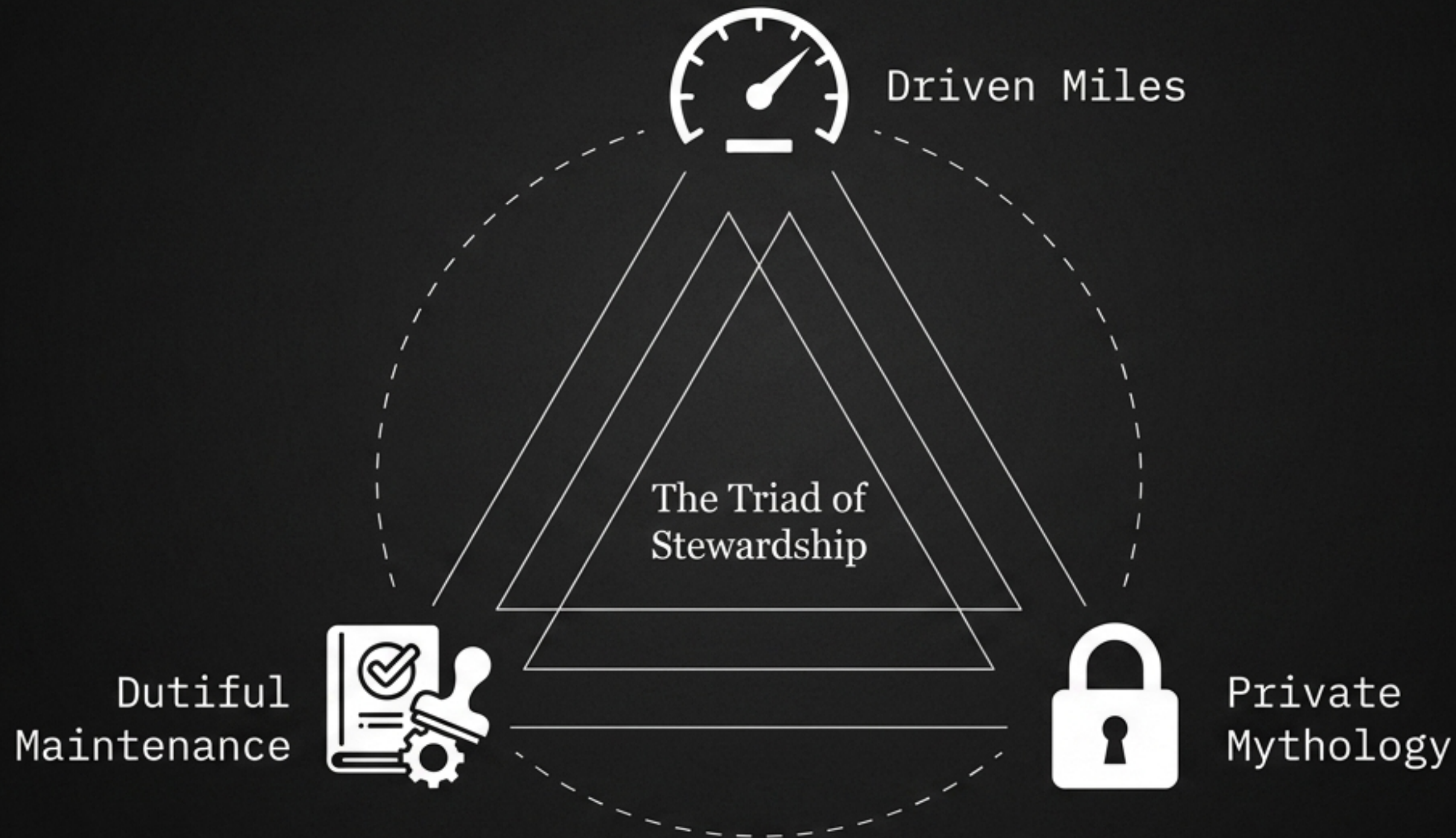
Hero odometer treated as evidence, not damage.

# Mileage becomes provenance.

Odometer photos, road-use notes, and service intervals tell the truth of a car that has been kept alive.



# The Anatomy of Provenance



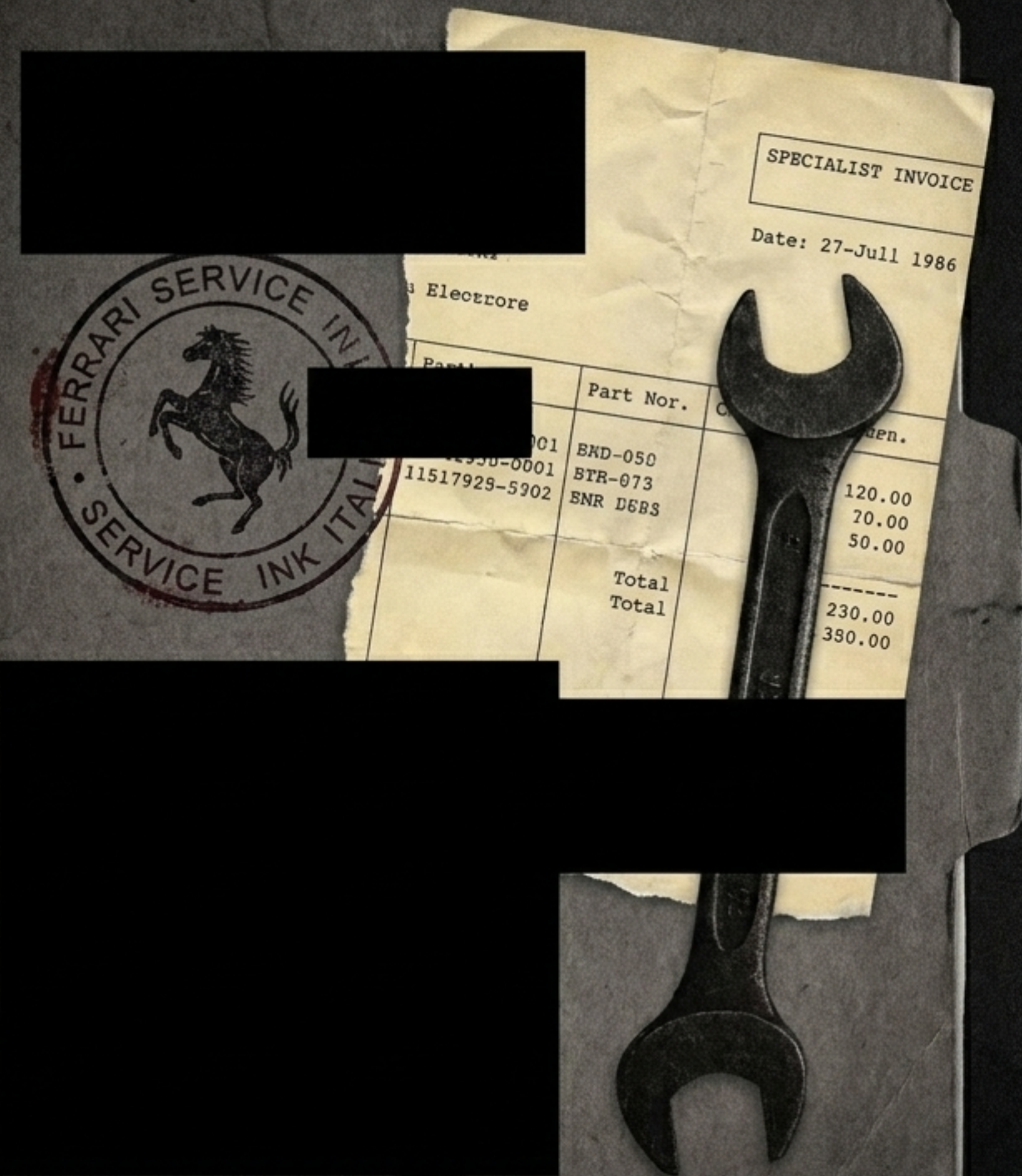


# 19,420

Documented miles

---

Hero odometer  
treated as evidence,  
not damage



# 42 records

## Service mythology

---

The service file carries the myth. Major services, specialist invoices, books, tools, and inspection photos stay tied to the exact machine. Invoices, stamps, correspondence, and owner notes.



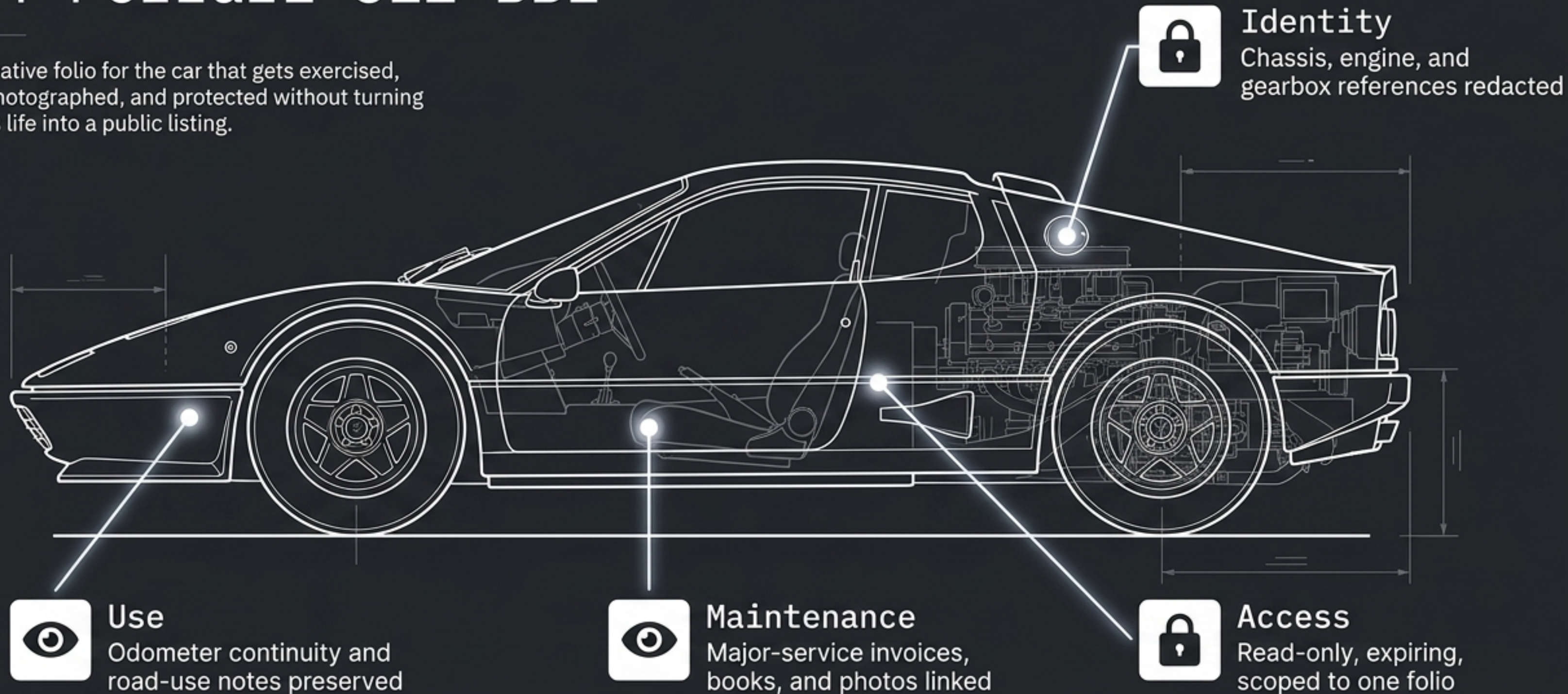
## Private data shown

The story stays controlled. No owner identity, full VIN, source file, or private notes. Owners can show the folio without exposing names, archive locations, notes, or the rest of the collection.

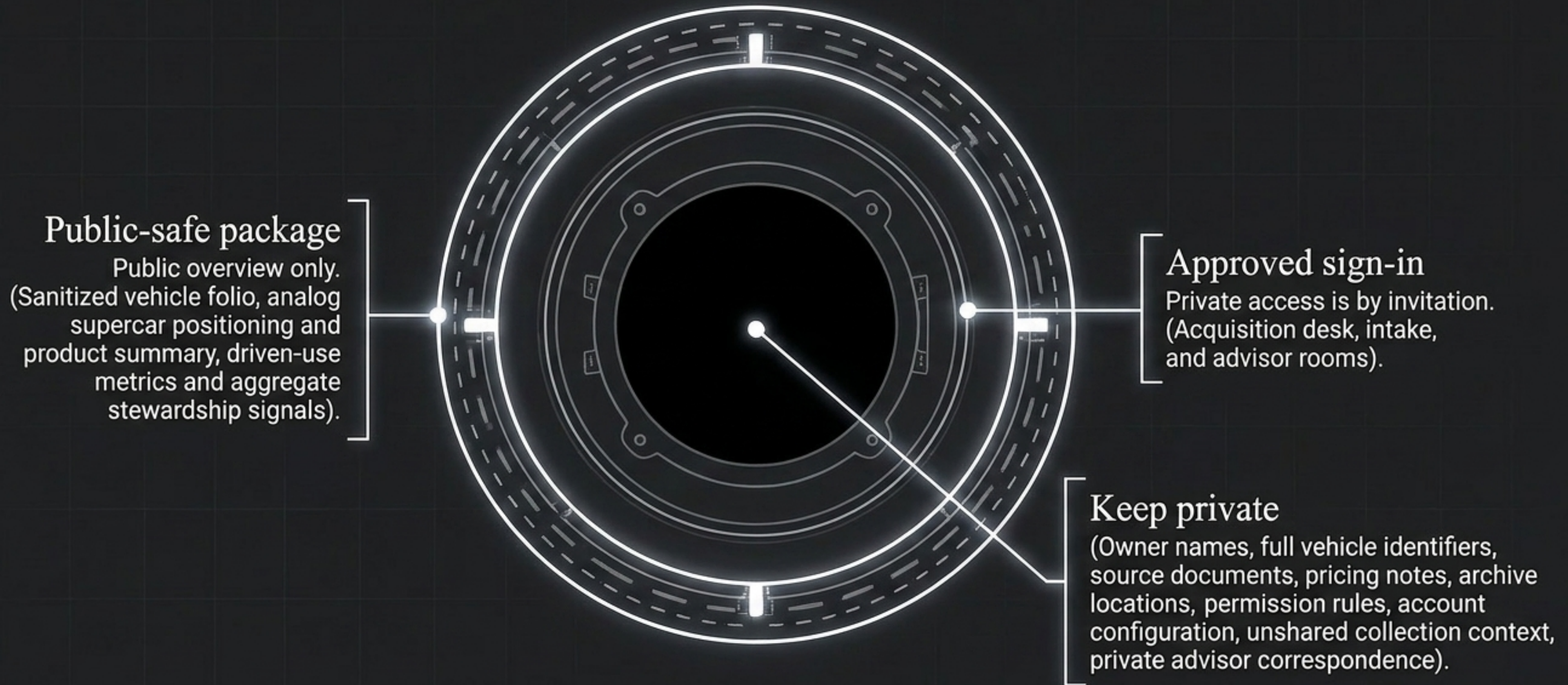
# Driven analog supercar folio

## 1984 Ferrari 512 BBi

A representative folio for the car that gets exercised, serviced, photographed, and protected without turning the owner's life into a public listing.



# The Stewardship Layer & Sharing Boundary



# VeloVault Sharing Modes

Owner  
first look

Send public overview.  
Show the stewardship thesis without exposing a real collection.



Marque  
specialist  
diligence

Use a private walkthrough.  
Show private routes only in a screened session when service, provenance, and market context need detail.



Portfolio  
owner

Approved sign-in.  
Open the private register only when identity, records, and advisor context should be available.



# The Driven Register

---

6 vehicles. Analog supercar and hero-driver folios.

---

A record room for imperfect miles, and the human restraint required to show only what should be shown.